



Pumpmatic Series 77A

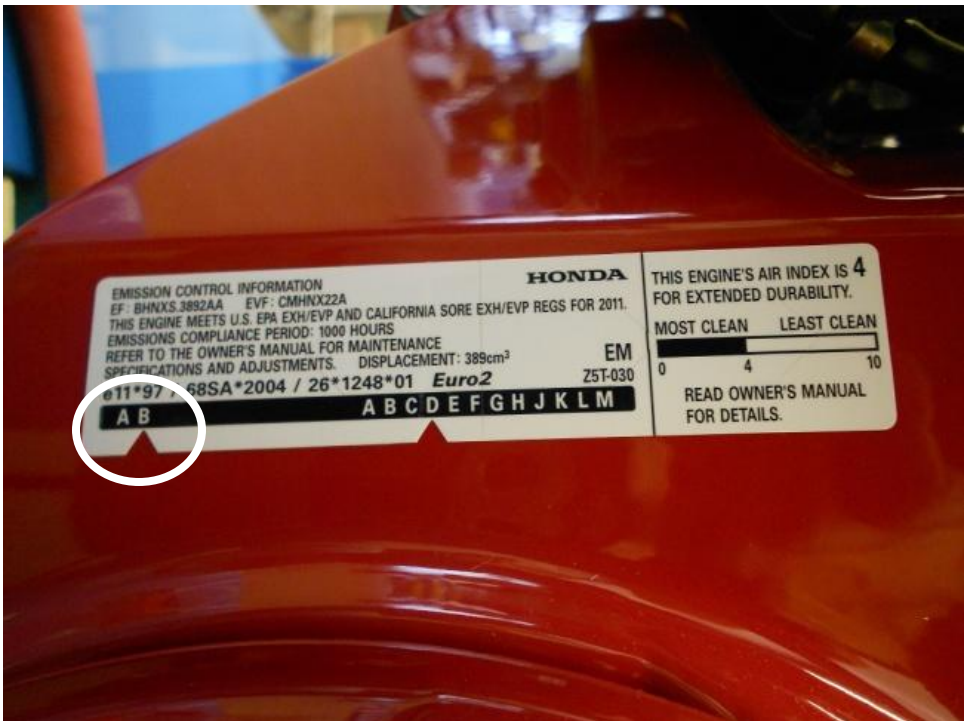
Important Notice About Honda 13hp (GX390) Engines



Honda has updated the **13hp (GX390) engine** to meet new EPA regulations. **Pumpmatic** controllers have been updated to meet the changes made by Honda.

NOTICE: *Older style Pumpmatic controllers will not work with the new engines and the new style Pumpmatic controllers will not work with the old engines.*

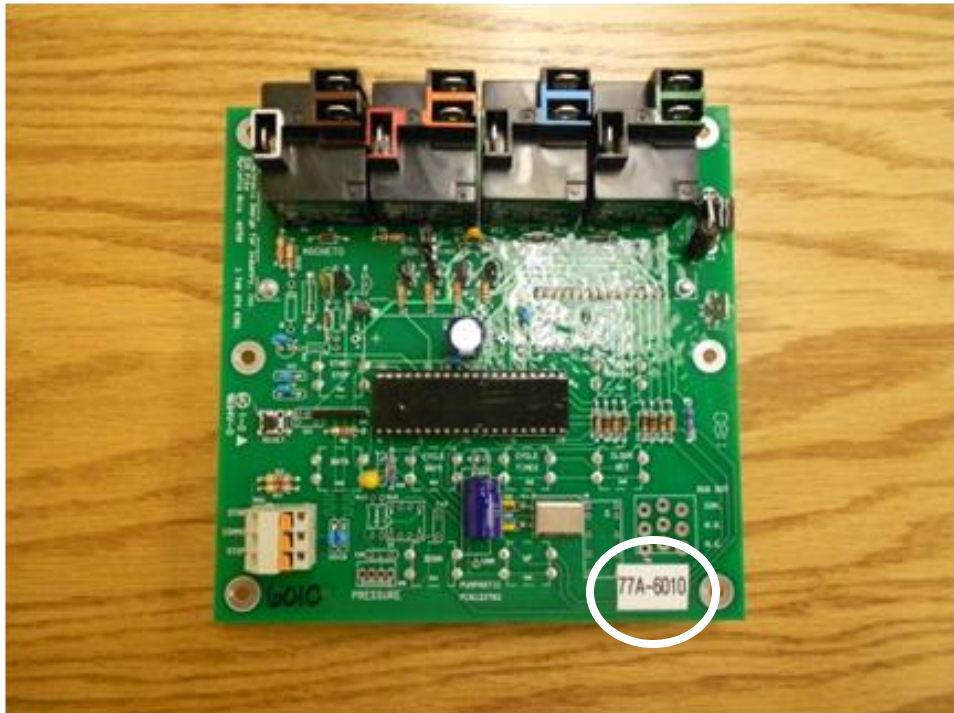
You can identify the engine by the Emissions Control Sticker located beside the pull rope. If the **B** on the left side of the sticker is notched as shown below it is the new style engine. If the **A** is notched it is the old style engine. **(B = new) (A = old)**



The Pumpmatic boards are identified with a serial number on a white sticker located on the back of the board. **ONLY** boards with a serial number that has a **77A** prefix will work with the **NEW** Honda engines (**notch B**). Photo below shows **77A** prefix that will work with the **new engine only**.

77A goes with **notch B (new engine)**

If you have any questions, please contact EDI at (740) 401-4000.





**QUALITY & SERVICE
MAKE THE "DIFF"**

Electronic Design for Industry
100 Ayers Blvd., Belpre, OH 45714
(740) 401-4000
www.ediplungerlift.com

*Copyright © 2011 by Electronic Design for Industry
Updated 2011-08-08*