



LeROI Line of Rotary Screw Compressors

The most versatile technical solution for dry or wet gas applications moving from 200 mcf/d to 5 MMCFD at pressures up to 350 psi.



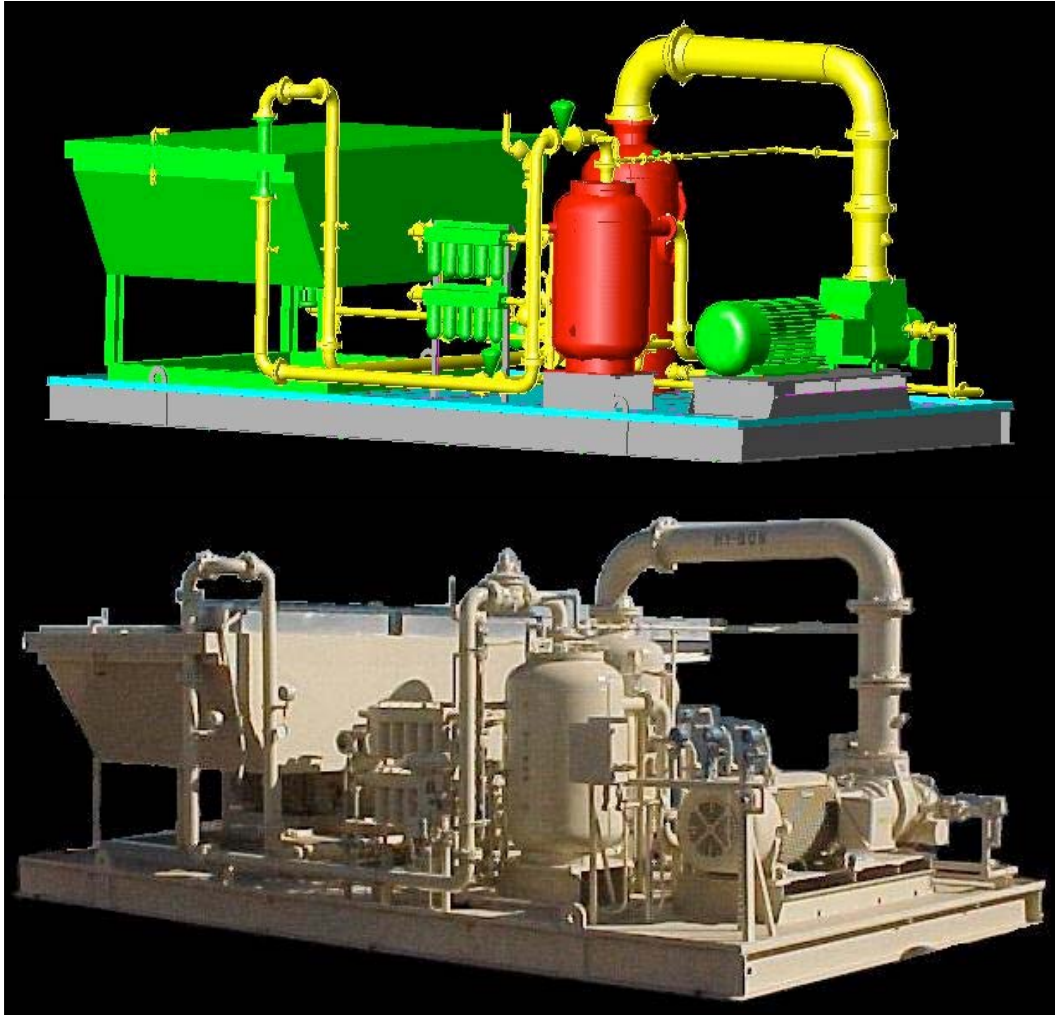
As a global leader in the packaging of oil flooded rotary screw compressors, Hy-Bon Engineering has designed and packaged hundreds of rotary screw compressors in applications ranging from gas boosting and casinghead gas reduction to vapor recovery in a variety of industries.

The Hy-Bon Difference:

- *Automated restart on BOTH electric and engine drive units*
- *Automated bypass allows precise control and extends driver / compressor life*
- *Automated liquid transfer system dramatically reduces pumper workload*
- *Capable of multiple shutdown settings in NEMA 4, 4X or 7 control panel*
- *Programmable PLC and annunciator with digital LCD readout*
- *Complete parts stocking & service support*

❖ *Fully contained environmental skid designs available*

❖ *Custom engineered options available*



Example Rotary Screw Packages

Gas Throughput in MSCFD Discharge Pressure (PSIG)

Model #	60	70	100	150	200	250	300	350
-	-	-	-	-	-	-	-	-
HB-HG12248	293	297	303	271	255	243	222	202
HB-HGS17144	335	335	326	304	280	255	231	-----
HB-HG24087	746	739	699	665	601	537	-----	-----
HB-LG30111	1,949	1,960	1,885	1,898	1,744	-----	-----	-----
HB-LG30172	3,225	3,211	3,169	3,000	-----	-----	-----	-----
HB-LG30200	3,788	3,764	3,799	-----	-----	-----	-----	-----

Performance shown is for Natural Gas with 0.65 SG, 0.0 PSIG Suction Pressure and 60°F Suction Temperature.