

HY-BON ENGINEERING COMPANY, INC.

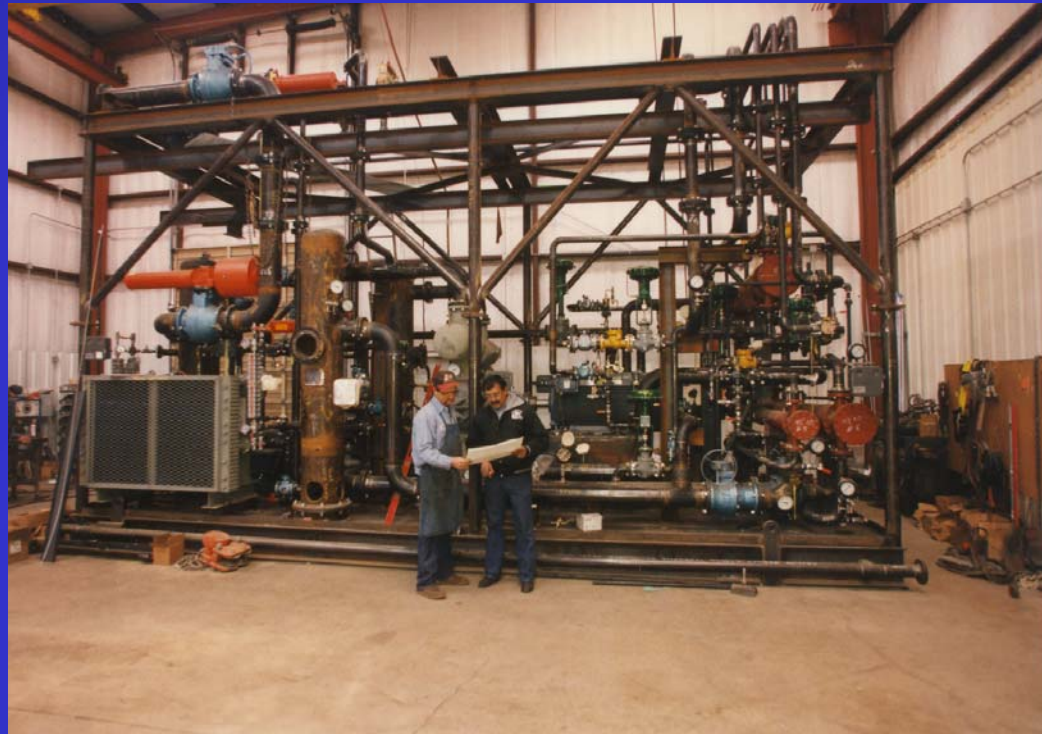


Examples of Offshore Units



OFFSHORE VRU'S

This two story VRU package was fabricated for the Texaco Petronius platform. A two-stage unit, it was designed for 700 MSCFD at a discharge of 275 psig.



OFFSHORE VRU'S

Texaco Petronius VRU being disassembled for shipping. Ordinarily, this package would take up twice this amount of real estate. We elected to go vertical to save space.



OFFSHORE VRU'S

End view of the unit for the Petronius platform. Hy-Bon provided full commissioning startup for the unit on the platform.



OFFSHORE VRU'S

Most of the second story of the Petronius VRU had to be removed for shipping. It was reassembled in Houma, Louisiana prior to being taken to the platform.



OFFSHORE VRU'S

Hy-Bon built this VRU for an offshore platform owned by El Paso. All fabrication was done according to El Paso's offshore specifications.



OFFSHORE VRU'S

A view of the El Paso platform. The Hy-Bon VRU is on the leg to the left. This rotary vane compressor package handled 500 MSCFD from 0 to 55 psig.



OFFSHORE VRU'S

This was a high-spec offshore VRU package for Kerr-McGee for the Gulf region. This screw compressor handled 600 MSCFD to 120 psig.



OFFSHORE VRU'S

The Kerr-McGee package was constructed entirely to KM offshore specs, including the use of insulation for personnel protection.



OFFSHORE VRU'S

This fully automated package for Hunt will move 300 MSCFD at a discharge pressure of 70 psig. This particular machine is capable of 350 psig discharge.



HY-BON ENGINEERING COMPANY, INC.



Setting a New Standard

